

**NOTE**  
 For hydraulic properties and section dimensions see 526-D-2414.  
 O & M Road is on left side of Ogden Valley Canal from  
 Sta. 21+60 to Sta. 238+00

**ALWAYS THINK SAFETY**

8-6-62  
 D *FHK* ELIMINATED DRAIN CROSSINGS STA. 154+67, 162+46, 165+26.5,  
 178+39.5 AND 179+86  
 DATA TAKEN FROM FIELD DWG. 526-412-5321

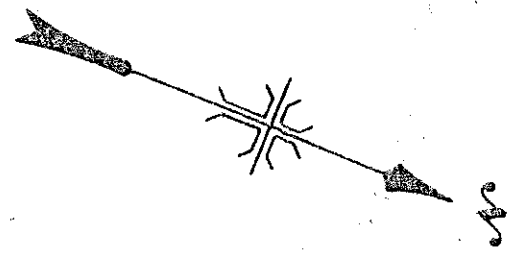
UNITED STATES  
 DEPARTMENT OF THE INTERIOR  
 BUREAU OF RECLAMATION  
 WEBER BASIN PROJECT-UTAH,  
**OGDEN VALLEY CANAL**  
 STA. 150+00 TO STA. 180+00  
**PLAN AND PROFILE**

DRAWN *ADW* SUBMITTED *F. Ritchey*  
 TRACED *G.H.B.* RECOMMENDED *Heubelt*  
 CHECKED *R.H.K.* APPROVED *W. R. ...*  
CHIEF CANALS DIVISION

7-21-67 AS BUILT BY 412, LTR. II - 9-66  
 0-13-72  
 5-12-64 ADDED DRAINAGE INLETS AT STA. 154+67, 162+46, 165+26,  
 D AND 178+39.5.  
 M.C.D.

DENVER, COLORADO DEC. 29, 1961  
 SHEET 6 OF 17

**526-D-2371**



P.I. 186+06.8  
 $\Delta = 07^\circ 26' \text{ Rt.}$   
 $R = 500'$   
 $T = 32.5'$   
 $L = 64.9'$   
 $P.C. 185+74.3$   
 $P.T. 186+39.3$

P.I. 193+30.7  
 $\Delta = 11^\circ 12' \text{ Lt.}$   
 $R = 500'$   
 $T = 49.0'$   
 $L = 97.8'$   
 $P.C. 192+81.7$   
 $P.T. 193+79.5$

P.I. 199+96.7  
 $\Delta = 27^\circ 05' \text{ Rt.}$   
 $R = 400'$   
 $T = 96.6'$   
 $L = 189.5'$   
 $P.C. 199+00.1$   
 $P.T. 200+89.6$

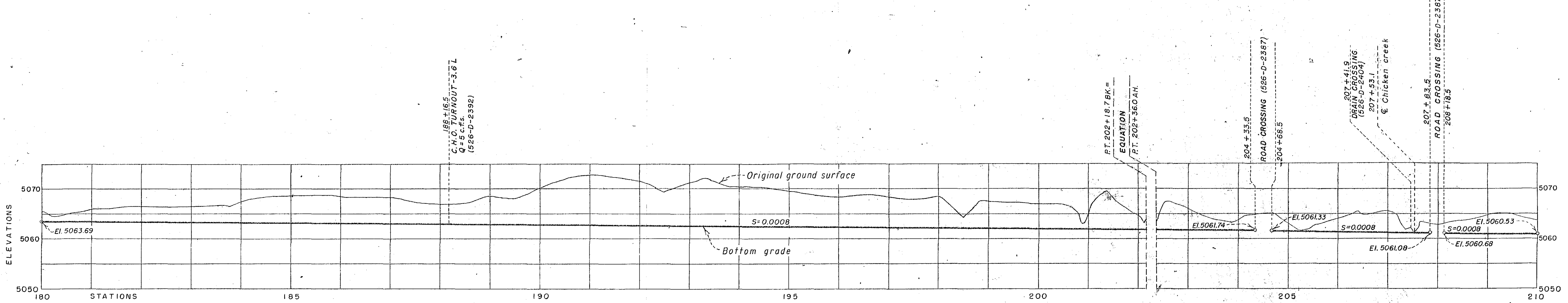
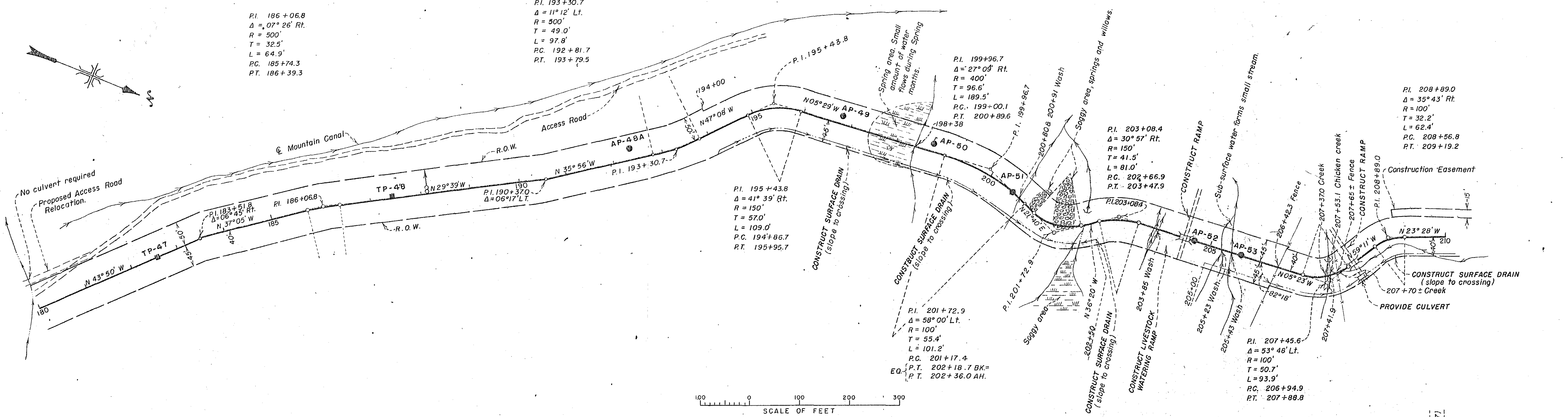
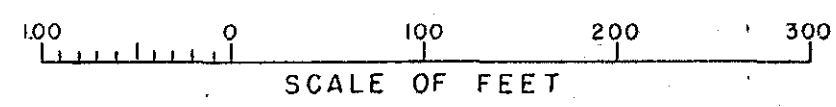
P.I. 203+08.4  
 $\Delta = 30^\circ 57' \text{ Rt.}$   
 $R = 150'$   
 $T = 41.5'$   
 $L = 81.0'$   
 $P.C. 202+66.9$   
 $P.T. 203+47.9$

P.I. 208+89.0  
 $\Delta = 35^\circ 43' \text{ Rt.}$   
 $R = 100'$   
 $T = 32.2'$   
 $L = 62.4'$   
 $P.C. 208+56.8$   
 $P.T. 209+19.2$

P.I. 195+43.8  
 $\Delta = 41^\circ 39' \text{ Rt.}$   
 $R = 150'$   
 $T = 57.0'$   
 $L = 109.0'$   
 $P.C. 194+86.7$   
 $P.T. 195+95.7$

P.I. 201+72.9  
 $\Delta = 58^\circ 00' \text{ Lt.}$   
 $R = 100'$   
 $T = 55.4'$   
 $L = 101.2'$   
 $P.C. 201+17.4$   
 $P.T. 202+18.7 \text{ BK.}$   
 $P.T. 202+36.0 \text{ AH.}$

P.I. 207+45.6  
 $\Delta = 53^\circ 46' \text{ Lt.}$   
 $R = 100'$   
 $T = 50.7'$   
 $L = 93.9'$   
 $P.C. 206+94.9$   
 $P.T. 207+88.8$



**NOTES**

For hydraulic properties and section dimensions see 526-D-2414.  
 O & M Road is on the left side of the Ogden Valley Canal  
 from Sta. 21+60 to Sta. 238+00.  
 Underdrain outlets at 201+00 and 201+83.

7-21-67	AS BUILT BY 412, LTR. 11-9-66.
D-13-77	
5-12-64	DELETED DRAIN CROSSING AT 198+38. ADDED INLET AT 202+34.
D MLD	

**ALWAYS THINK SAFETY**

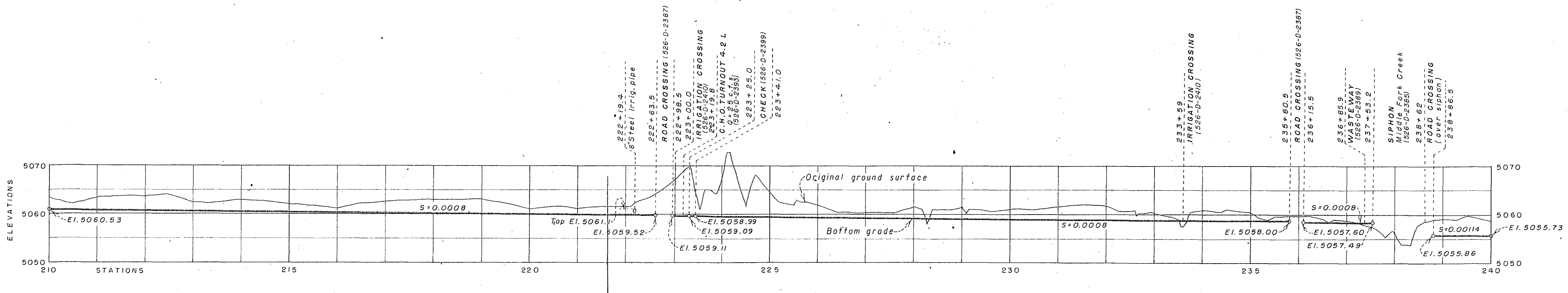
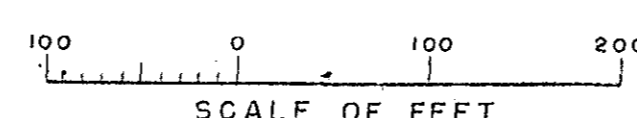
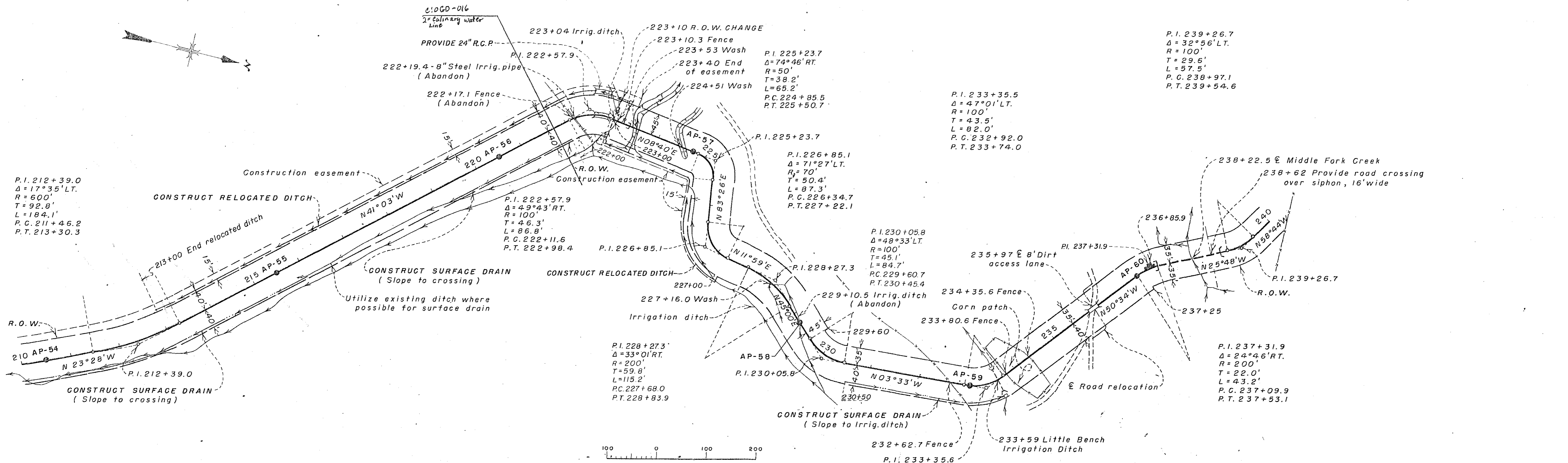
8-6-62  
 D RHK ELIMINATED DRAIN CROSSING STA. 202+37.9  
 DATA TAKEN FROM FIELD DWG. 526-412-5322 (REV. 11-15-61)  
 (REV. 2-9-62)

UNITED STATES  
 DEPARTMENT OF THE INTERIOR  
 BUREAU OF RECLAMATION  
 WEBER BASIN PROJECT-UTAH  
**OGDEN VALLEY CANAL**  
 STA. 180+00 TO STA. 210+00  
**PLAN AND PROFILE**

DRAWN: N.P.C. SUBMITTED: F. Ritchey  
 TRACED: J.P.V. RECOMMENDED: H. White  
 CHECKED: R.H.K. APPROVED: J. Rippon  
 CHIEF SANITARY BRANCH

DENVER, COLORADO, DEC. 6, 1961  
 SHEET 7 OF 17

**526-D-2372**



**NOTE**  
 For hydraulic properties and section dimensions see 526-D-2414.  
 O & M Road is on the left side of the Ogden Valley Canal from Sta. 21+60 to Sta. 238+00.  
 O & M Road is on the right side of the Ogden Valley Canal from Sta. 238+00 to Sta. 249+75.

DATA TAKEN FROM FIELD DWG. 526-412-5323.

UNITED STATES  
 DEPARTMENT OF THE INTERIOR  
 BUREAU OF RECLAMATION

WEBER BASIN PROJECT-UTAH  
**OGDEN VALLEY CANAL**  
 STA. 210+00 TO STA. 240+00  
**PLAN AND PROFILE**

DRAWN N.P.C. SUBMITTED *F. Ritchey*  
 TRACED H.M.G. E.V.C. RECOMMENDED *H. White*  
 CHECKED *R.H.K.* APPROVED *F. Ritchey*  
 CHIEF ENGINEER

DENVER, COLORADO, DEC. 6, 1961  
 SHEET 8 OF 17

**526 - D - 2373**

7-21-67  
 D-β.7.2  
 AS BUILT BY 412, LETTER 11-9-66